

Technical Datasheet

for Personal Protective Equipment: New Bochum goggles with hinge

<u>Articleno.:</u> BFKBB024				<u>Description:</u> New Bochum goggles 200x135mm with lens 2x60mm with hinge			
EN Norms:				CE-Certificate:			
EN 166				C4774UHL/R2			
Technical features							
Weight: 85g							
<ul style="list-style-type: none">Heat shield made of galvanized wire cloth2 rectangular lenses with the dimensions 60mm fit into the sturdy window framesprotects the face against radiant heat				<ul style="list-style-type: none">to avoid reflections the inside is blackenedthe Bochum goggles can be attached to a helmet by means of hinge			
Used materials:							
Wire cloth:				galvanized iron, W 0,51 D 0,24			
Edging				Alu-sheet 0,50mm			
Window frame				Alu-sheet 0,80mm			
Hinge				Alu-sheet 1,00mm			
Fields of use:							
<ul style="list-style-type: none">Heavy industry: esp. steel industry, foundries, chemical plants				<ul style="list-style-type: none">IR-protection			
Marking:				UHL 166 CE on the back, upper right side			

User manual

New Bochum Goggles

with hinge or with aluminium rail



Description

New Bochum goggles with lens attached to hard hat.

- The New Bochum goggles are made in two dimensions: 300x180mm or 200x135mm.
- In these dimensions the Bochum goggles are made of zinc-coated wire cloth or aluminium sheet.
- To enhance the stiffness the wire cloth is edged with an aluminium frame.
- The inside of the goggles is blackened so that the wearer is not blinded by glare from the inside.
- The window is made of sturdy aluminium sheet, which is pressed with the wire cloth.
- In the window fit inspection glasses and PC-visors with the dimensions 60x120mm or 50mm diameter.
- The lenses are securely clamped in the frame by two steel springs.

- Two types of attachment are available for Bochum goggles. By default the goggles can be screwed to the hard hat with a folding hinge. Alternatively, they can be attached to an universal visor carrier with an aluminium rail.

Manual

- Before using the Bochum goggles you have to make sure that a lens is inserted.
- For changing the lenses, you have to raise the steel springs and turn them aside. Now the lens can be inserted and the steel springs can be returned to their original position.
- The Bochum goggles are attached to the hard hat by means of a folding hinge. For this, the brim of the hard hat must be drilled and the enclosed M5 screw is attached to the hard hat with the flange nut. The folding hinge can now be shoved on the hard hat and fixed with a wing nut.

- The Bochum goggles are attached to the hard hat by means of a folding hinge. For this, the aluminium rail is attached to a visor carrier with its oval holes.

Storage

Personal protective equipment should be stored in dry rooms. Especially components made of plastics should not be exposed to intense solar radiation.

Cleaning

The Bochum goggles should only be cleaned with thinner or compressed air.

To avoid any scratches on the lenses, no hard or grained objects should be used for the cleaning. As far as possible the lenses should be cleaned with compressed air.

Disinfection

The Bochum goggles can be treated with mild, standard disinfectants.

Safety checks

Before using the Bochum goggles the user should do a safety check. Damaged face shields or other damaged parts have to be replaced.

Maintenance/repairs

Maintenance has to be conducted on a regular basis.

To be checked in particular:

- Attachment and fit of the lenses.
- Mobility of the folding hinge.
- Rivetted connection of the aluminium rail with the Bochum goggles.
- Welded seam between Aluminium window frame and the wire cloth.

Repairs can only be done with the original parts of the manufacturer

Decay time/aging

New Bochum goggles are exposed to strong IR-radiation. Therefore no general decay time can be stated. It depends on the duration of use and the overall condition. After 3 years the latest the personal protective equipment should be replaced

Used materials (depending on model)

- Zinc-coated wire cloth
- Aluminium sheet 0,8mm
- Aluminium sheet 0,5mm
- Heat-resistant hard-coating

Marking of the New Bochum goggles: UHL CE

The article is tested according to EN 166:2001 (in conjunction with Regulation (EU)2016/425).

Explanation of the marking:

UHL = Manufacturer
Rudolf Uhlen
CE = CE sign

Notified Body:

DIN CERTCO Gesellschaft für Konformitätsbewertung mbH
Alboinstr. 56
12103 Berlin
Notified Body: No. 0196

General remarks

The New Bochum goggles must be securely attached to the hard hat. This happens either directly (screw connection) or with the right hard hat carrier (all Rudolf Uhlen GmbH carriers)

When approaching the danger zone, the New Bochum goggles have to be flipped down.

The user is responsible to use the correct filter lenses. The following aspects have to be considered:

- Type of optical radiation (IR- or UV-radiation).
- Intensity of the radiation (protective shade according to EN 170 and EN 171).
- Mechanical risks due to flying particles.

It has to be considered that the Bochum goggles do not cover the whole face therefore provide only limited protection against mechanical risks. In addition no PC-visors with 1mm thickness can be used in the window frame. The visors have to be at least 2mm thick or must be made of laminated glass.

The user has to take in consideration that the optical radiation only hits the eye through the filter glass. The wire cloth does not provide sufficient protection against the radiation. The same applies for radiation coming from the side of the Bochum goggles.

The window frame has only a limited field of vision that does not comply to the normed field of vision of the EN 166. Therefore the Bochum goggles can only be used for focused works for a short time.

Warning!

The safety officer has to be contacted to make sure that the user is working safely.

Eye-protection devices against particles with high velocity could transmit the impact energy, if the device is worn together with standard glasses.

If the eye-protection device is composed of two different de-

vices, only the protection of the device with the lower protection class is given.

If the articles are used in high temperature areas, you have to use articles with the test marking "BT". The letter T indicates a test environment of extreme temperatures (EN 166).

The CE-testing does not include the lenses made of minerals.

The Bochum goggles should only be used for a short period of time and then only dedicated to a certain purpose – that is working with hot metal. The protective effect exists only if the look is focused on the molten mass. There is no protection against collateral radiation.

This manual refers to the following articles:

New Bochum Goggles with hinge

BFKBB001	BFKBB003
BFKBB004	BFKBB007
BFKBB021	BFKBB024
BFKBB071	BFKBB072

New Bochum Goggles with aluminium rail

BFKBB001-1	BFKBB003-1
BFKBB004-1	BFKBB007-1
BFKBB071-1	BFKBB072-1

Manufacturer:

Rudolf Uhlen GmbH
Am Höfen 13
42781 Haan
Tel.: 0049/2129/1444
Fax: 0049/2129/59980
Internet: www.aschua-uhlen.de
E-mail: info@aschua-uhlen.de
Management: Volker Fiedler
Steffen Fiedler
Comm.register: HRB 17088
Register court Wuppertal

EU-Baumusterprüfbescheinigung

Inhaber	Rudolf Uhlen GmbH Am Höfgen 13 42781 Haan DEUTSCHLAND
Registernummer	C4774UHL/R2
Produkt	Tragkörper für Gesichtsschutzschilde
Typ, Modell	BFKBB001, BFKBB003, BFKBB004, BFKBB007, BFKBB021, BFKBB024, BFKBB071, BFKBB072
Prüfgrundlage(n)	DIN EN 166:2002-04
Prüfberichte/ Prüfzeichen	10881-PZA-13, 10882-PZA-13, 10883-PZA-13, 10884-PZA-13, 10885-PZA-13, 10886-PZA-13, 10887-PZA-13, 10888-PZA-13, 12961-PZA-18, 12962-PZA-18, 12963-PZA-18, 12964-PZA-18, 12965-PZA-18, 12966-PZA-18, 12967-PZA-18, 12968-PZA-18, 10591-PZA-23, 10592-PZA-23, 10593-PZA-23, 10594-PZA-23, 10595-PZA-23, 10596-PZA-23, 10597-PZA-23, 10598-PZA-23
Kennzeichnung des Produktes	Detaillierte Kennzeichnung siehe Anhang
Gültigkeitszeitraum	2023-12-12 bis 2028-06-19
Konformität	DIN CERTCO bestätigt die Übereinstimmung des Baumusters mit den geltenden grundlegenden Gesundheitsschutz- und Sicherheitsanforderungen nach Anhang II der Verordnung (EU) 2016/425 für persönliche Schutzausrüstung. Die Bewertung beruht auf den vom Hersteller oder vom bevollmächtigten Vertreter eingereichten Prüfmustern, den technischen Unterlagen, sowie dem Prüfbericht des Prüflabors.

Eventuell vorhandene Vorgängerversionen dieser EU-Baumusterprüfbescheinigung verlieren hiermit ihre Gültigkeit.

Weitere Informationen siehe Anhang.

2023-12-12

Dipl.-Biol. Katharina Vehring, M. Eng.

Benannte Stelle 0196

K. Vehring



ANHANG

Seite 1 von 2

Zertifikat	C4774UHL/R2 von 2023-12-12
Herstellerkennzeichen	UHL
Kennzeichnung des Produktes	CE
Produktspezifikationen	<p>Material/Werkstoff: Aluminium, Stahl Farbe: Silber/schwarz</p> <p>Abmessungen: BFKBB001, BFKBB072: 300 mm x 180 mm (Fenster: 60 mm x 120 mm) BFKBB003, BFKBB007: 200 mm x 135 mm (Fenster: 2 x Ø 50 mm) BFKBB004, BFKBB071: 200 mm x 135 mm (Fenster: 60 mm x 120 mm) BFKBB021: 300 mm x 180 mm (Fenster: 2 x 60 mm x 60 mm) BFKBB024: 200 mm x 135 mm (Fenster: 2 x 60 mm x 60 mm)</p> <p>Ausführungen: BFKBB001, BFKBB003, BFKBB004, BFKBB021, BFKBB024: Drahtgewebeschirm für Helmmontage BFKBB007, BFKBB071, BFKBB072: Alublechschirm für Helmmontage</p>
Weitere Produktinformationen	<p>Bochumer Brillen</p> <p>Die Schutzwirkung gegen Hitzestrahlung besteht nur bei direktem Blick in die Schmelze - das Produkt bietet keinen Schutz vor seitlicher Einstrahlung.</p> <p>Eingeschränktes Gesichtsfeld: Nur für den kurzzeitigen direkten Blick in die Schmelze geeignet.</p>
Bestimmungen/Pflichten	<p>Diese EU-Baumusterprüfbescheinigung ist Eigentum von DIN CERTCO und kann zurückgezogen werden, sofern die Bedingungen, die zur ihrer Ausstellung geführt haben, nicht mehr erfüllt sind.</p> <p>Die Informationsbroschüre (Gebrauchsanweisung) zum genannten Augenschutzprodukt muss in den Amtssprachen des Bestimmungslandes verfasst sein und unter anderem folgende Angaben zur notifizierten Stelle enthalten:</p>



ANHANG

Seite 2 von 2

Zertifikat

C4774UHL/R2 von 2023-12-12

DIN CERTCO Gesellschaft für
Konformitätsbewertung mbH
Alboinstraße 56
12103 BERLIN
DEUTSCHLAND
Kennnummer der notifizierten Stelle: 0196

Auf dem Produkt muss, soweit möglich, eine Typen-, Chargen- oder Seriennummer oder ein anderes Kennzeichen zur Identifikation angebracht sein.

Auf dem Produkt muss, soweit möglich, der Name und die Postanschrift des Herstellers oder, sofern dieser nicht im Europäischen Wirtschaftsraum ansässig ist, der Name und die Postanschrift eines im Europäischen Wirtschaftsraumes ansässigen bevollmächtigten Vertreters oder Einführers angebracht sein.

Auf dem Produkt und dessen Verpackung muss Monat und Jahr der Herstellung und/oder Monat und Jahr des Verfalls unauslöschlich und eindeutig angebracht sein.

Es ist nicht gestattet, dass Produkt mit der Kennnummer 0196 zu kennzeichnen.

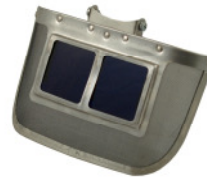
Jede Änderung am Produkt, den technischen Unterlagen oder dem Qualitätssicherungssystem muss DIN CERTCO schriftlich mitgeteilt werden.

Es gelten die Allgemeinen Geschäftsbedingungen von DIN CERTCO.



EU-DECLARATION OF CONFORMITY

1. PPE: **BFKBB024**
2. Manufacturer: **Rudolf Uhlen GmbH
Am Höfgen 13
42781 Haan**
3. This declaration of conformity is issued under the sole responsibility of the manufacturer:
Rudolf Uhlen GmbH.
4. Object of declaration:
Neue Bochumer Brille, 200x135mm, window 2x60x60mm, with hinge
5. The object of the declaration described in point 4 is in conformity with the relevant Union harmonisation legislation: guideline 2001/95/EG und regulation (EU) 2016/425
6. Where applicable, the notified body DIN CERTCO Gesellschaft für Konformitätsbewertung mbH Alboinstr. 56, 12103 Berlin (0196) performed the EU type-examination (Module B) and issued the EU type-examination certificate **C4774UHL/R2**.
7. Additional information Angaben:
Signed for and on behalf of:
Rudolf Uhlen GmbH



Haan, 12. December 2023:



Steffen Fiedler
-Geschäftsführer-